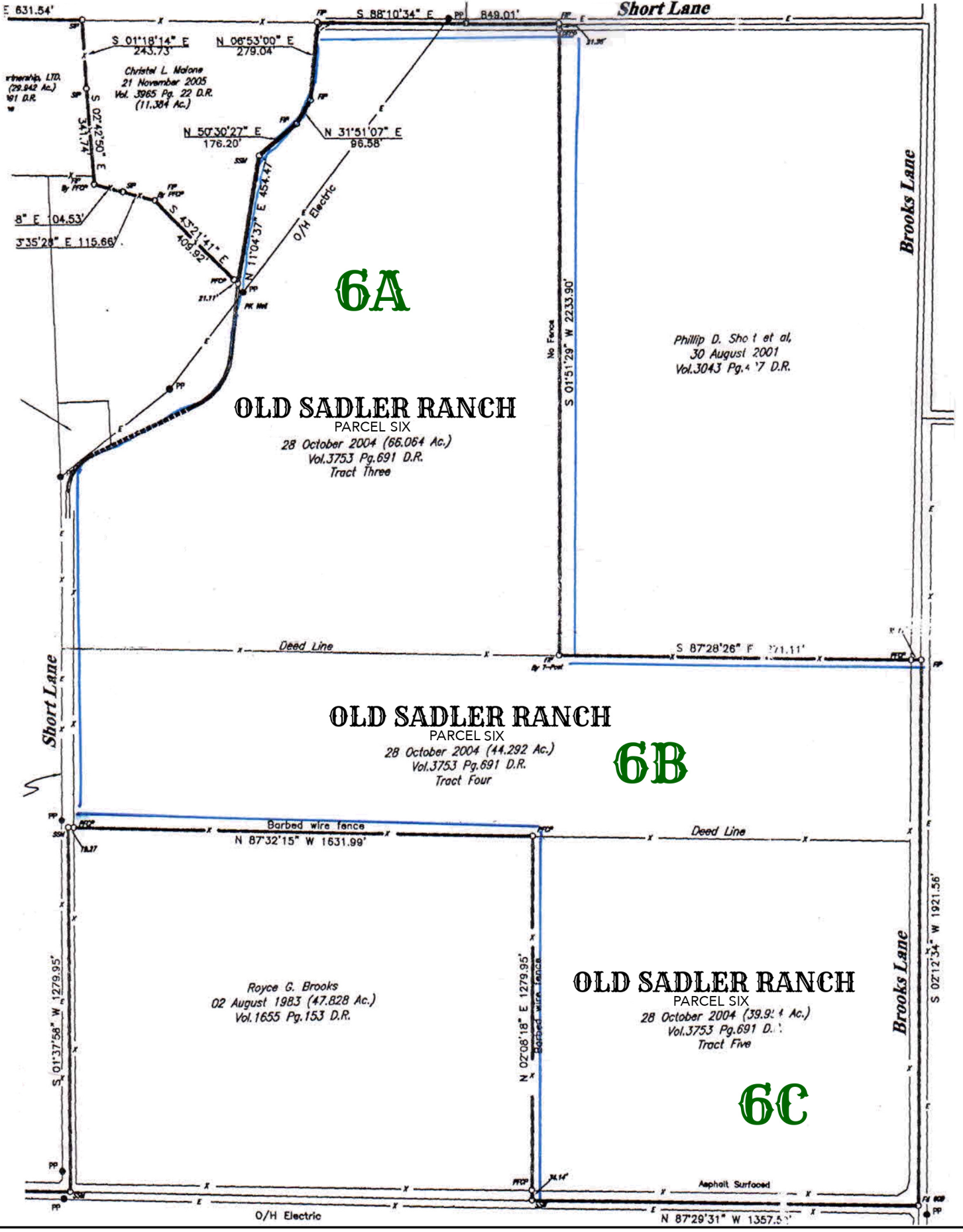




# OLD SADLER RANCH

PARCEL SIX 150.306 ACRES



*Christel L. Malone*  
21 November 2005  
Vol. 3965 Pg. 22 D.R.  
(11.304 Ac.)

## 6A

### OLD SADLER RANCH

PARCEL SIX  
28 October 2004 (66.064 Ac.)  
Vol. 3753 Pg. 691 D.R.  
Tract Three

*Phillip D. Short et al.*  
30 August 2001  
Vol. 3043 Pg. 17 D.R.

### OLD SADLER RANCH

PARCEL SIX  
28 October 2004 (44.292 Ac.)  
Vol. 3753 Pg. 691 D.R.  
Tract Four

## 6B

### OLD SADLER RANCH

PARCEL SIX  
28 October 2004 (39.914 Ac.)  
Vol. 3753 Pg. 691 D.R.  
Tract Five

## 6C

*Royce G. Brooks*  
02 August 1983 (47.828 Ac.)  
Vol. 1655 Pg. 153 D.R.

Aphalt Surfaced

O/H Electric

N 87°29'31" W 1357.5'